

What Is IPInformer?

IPInformer is an application to inform you when the IP (internet) address of your computer changes. With most broadband connections, this can happen at any time but is especially likely after an outage or power failure.

Knowing your IP is useful if you wish to access your PC remotely using remote desktop, ftp, or web pages hosted on it. These services will require additional configuration and security. You may also need to configure your broadband router for these services.

IPInformer is designed for fairly technical users. If the above doesn't mean anything to you, then IPInformer probably isn't for you.

Features

- Keep track of your IP address
 - DHCP allocated broadband addresses can change at any time
 - Works whenever your computer is on (even after reboot)
- Alternative to Dynamic DNS
 - No adverts
 - No service charges
- E-mail your IP address whenever it changes
 - Configurable template allows you to link to your own web site/ftp server/remote desktop
- FTP your IP address to remote machines
 - Update links to your web site/ftp server

How does IPInformer Work?

The IPInformer application comes in two parts.

The core part is a Windows Service "IPInformerService" which starts every time your computer boots, monitoring your IP address and notifying you of any changes. This is called "Checking".

The part you see is a application, "IPInformer", that sits in the system tray to alert you of any problems and allows you to configure the service.

Installing IPInformer

To install IPInformer, please download the installer package from the IPInformer website at <http://www.salientpoint.co.uk/IPInformer>. You may need to be logged in as an administrator to run this package. This will install IPInformer, and configure it to start automatically.

iShare uses a Windows component called the “.NET Framework 2.0” which will normally have been installed on your machine by Windows Update. If you do not have this component installed, you will be prompted to install it. You can download this component from the Microsoft website.

You can completely uninstall IPInformer at any time using the “Add or Remove Programs” option in your systems Control Panel.

Downloading a Trial License

IPInformer is a commercial product, and you will need a license to use it. However, it is free to download and try for 30 days. To take advantage of this free trial, press the “Request Trial License” button on the licensing window that will appear at the end of installation:



This will open a new window where you can type in your name. Unless you are using IPInformer for work, leave Company set to “-”, then press “Go”.

Web Licensing

Your Details

Name: My Name Here
Company: -

Request License

Trial License Purchased License

Username:
Password:

If you have not already purchased your license, click here to buy:
<http://www.salientpoint.co.uk/Product.aspx?Prod...>

License Service

Address:
Status:

Go Close

You will see some status information in the panel at the bottom of the window, which should finish up with “Done!” after a few seconds. Once this appears, click “Close” to return to the main licensing panel. This should now show details of your trial license:

License Information

IPInformer

License

Status: License Expires in 23 days
Name: Ian Stevenson
Company: Salient Point

Product

Product: IPInformer
Publisher: Salient Point
Copyright: ©1998-2008 Salient Point

Actions

Request Trial License
Download License
Load License from File

Done

Once you have obtained a trial license, you should open the settings window and configure relevant e-mail and FTP settings – see later sections for details of how to do this.

Purchasing a Full License

To purchase a full license for IPInformer, go to the IPInformer website at <http://www.salientpoint.co.uk/IPInformer>. Here you will find instructions for buying and installing your IPInformer license.

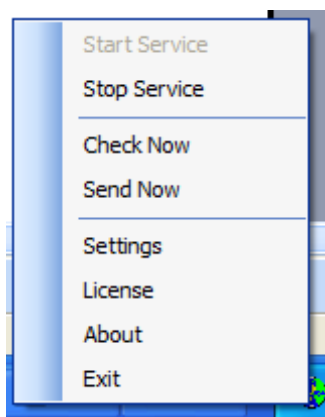
You will download your full license with the “Download License” button, and you will need the username and password you received on purchasing the license. You **MUST** keep these in a safe place, as you may need them in the future if you upgrade to a newer version of IPInformer.

Using IPInformer

Once IPInformer is installed you will see the IPInformer icon in your system tray (the area near the clock, usually at the bottom right of your screen).



To access IPInformer functions, right click on the icon to show the IPInformer menu:

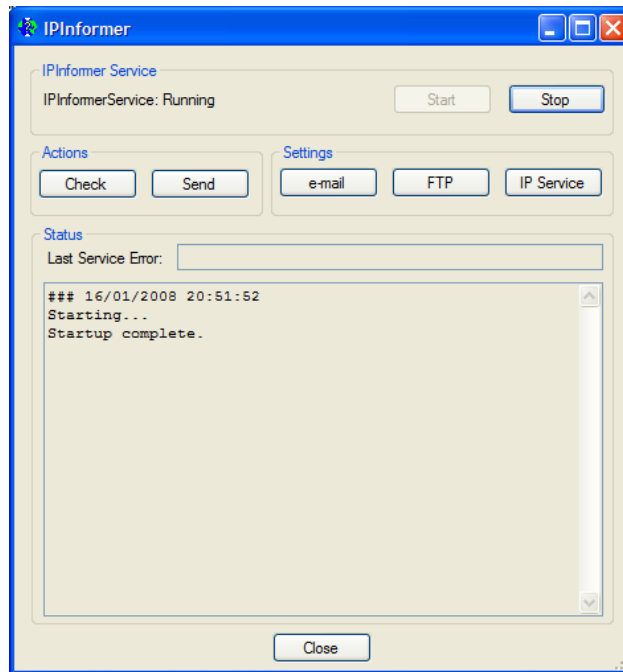


The other options on this menu are:

- **Exit:** closes your copy of the IPInformer monitor. The service will keep running in the background if it is enabled.
- **About:** displays version information for IPInformer
- **License:** opens the licensing dialog so you can check the days remaining in your trial or load a full license
- **Settings:** opens the settings window
- **Send Now:** Forces IPInformer to send mails and files with your current IP address immediately.
- **Check Now:** Forces IPInformer to make an immediate check for changes to your IP address.

- **Stop Service:** Stops the service – this function is usually used only in diagnosing problems.
- **Start Service:** Starts the service – this function is usually used only in diagnosing problems.

The Settings Window



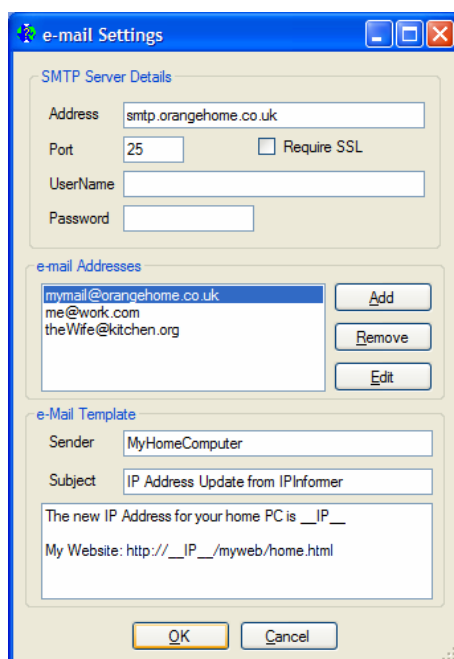
The **IPInformer Service** section of the settings panel shows the service state, and provides buttons to **Start** or **Stop** the service. These functions are usually used only in diagnosing problems.

The **Actions** section provides buttons to **Send** all mails and files immediately, or **Check** for a change to the IP address immediately (sending if necessary).

The **Settings** section contains buttons to open the **e-mail**, **FTP**, or **IP Service** setting windows, which are described in more detail below.

Finally, the **Status** section shows the **last error** that occurred in the service (if any) and a recent **history** of actions within the service. These features are used for diagnosing problems, in conjunction with the Windows Event Log.

e-mail Settings Window

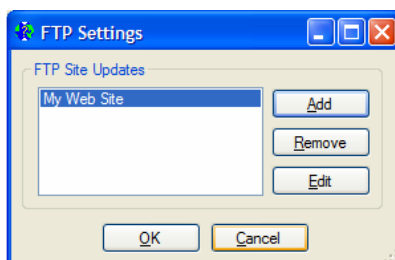


The **SMTP Server Details** panel should contain the details of the SMTP server you usually use. These details will be available from the website of your ISP or e-mail provider, and are the same as those used in Outlook, Outlook Express, Thunderbird Mail etc. You must complete these details if you wish to be able to use e-mail notification.

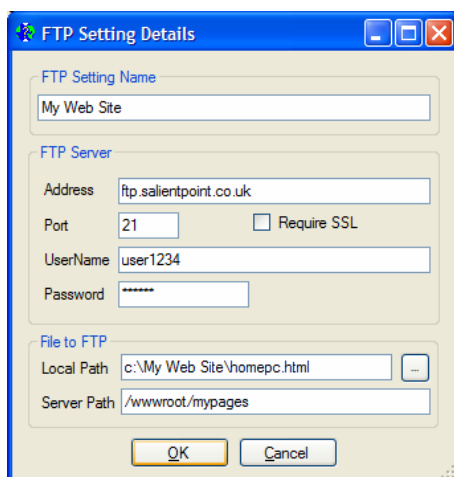
The **e-mail Addresses** panel contains a list of e-mail addresses to which notification should be sent. There are buttons to **Add** new entries, and to **Edit** or **Delete** the currently selected entry.

The **e-mail Template** defines the content of the message to be sent. The **Sender** field may need to be set to a valid e-mail address recognised by your SMTP server. The **Subject** field contains fixed text for the subject line, and the large text box contains plain text content for the message. Within the content, “__IP__” is used as a placeholder for the IP address.

FTP Settings Window



The FTP Settings Window contains a list of FTP settings for updating files remotely, along with buttons to **Add** a new configuration, or **Edit** or **Remove** existing settings. Adding or editing settings will open the details window for the setting:



The **FTP Setting Name** is purely for your own reference, a reminder of what is contained within the setting. The **FTP Server** box contains details of the **Address** of the server to connect to. The **Port** will usually be the FTP default of 21, and some servers may **Require SSL** for additional security. Fill in the **UserName** and **Password** if your server requires these.

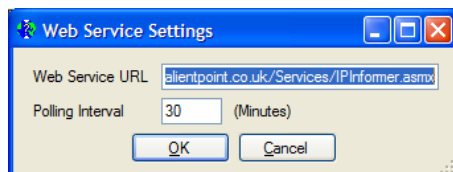
The file to be transferred by FTP is stored on the local host (your computer) and is specified by the **Local Path**. This file will be transferred to the server each time your address changes, with any instances of “__IP__” replaced with your IP address. If the file is to be transferred to a location other than the FTP root directory, you may also provide the **Server Path**.

The file you transfer may be of any type, for example, you might wish to transfer a web page (homepc.html) to your hosting provider to link to a site on your home pc:

```
<html>
<head>
  <title>My Home PC Website Link</title>
```

```
</head>
<body>
  <a href="http://__IP__/myweb/home.html">My Web Site on my home
  PC</a>
</body>
</html>
```

IP Service Window



IPInformer uses a Web Service to determine your IP address. This is the only way to reliably determine the Internet IP address of machines hosted in a NAT environment (often the case for Broadband connected machines). The **Web Service URL** can be entered in this window, as can the **Polling Interval**. This determines how often your address will be checked for changes. The default values for these settings should be suitable for most users.

Problems?

If you have any problems with IPInformer, please do not hesitate to contact us through our website, <http://www.SalientPoint.co.uk/>. We will always respond to your questions. If you have found a problem with our product, we would love to have the chance to put it right, and to ensure no-one else has the same problem in the future.